

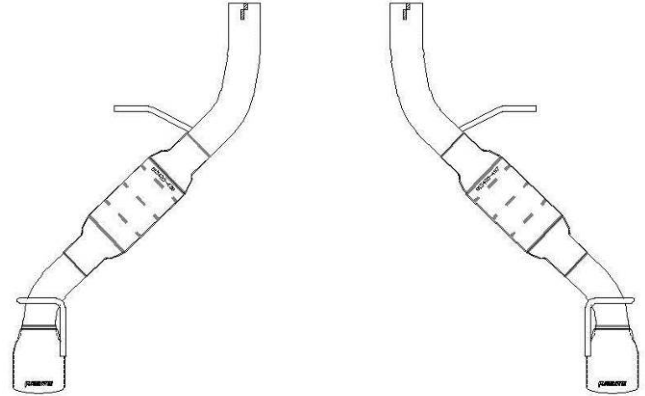


409S, Stainless Steel

Installation Instructions for:
SYSTEM #817751
2016-2017 CAMARO LT
 2.0L · L4 ENGINE
 Fits Hard-Top and Convertible Models,

PACKING LIST

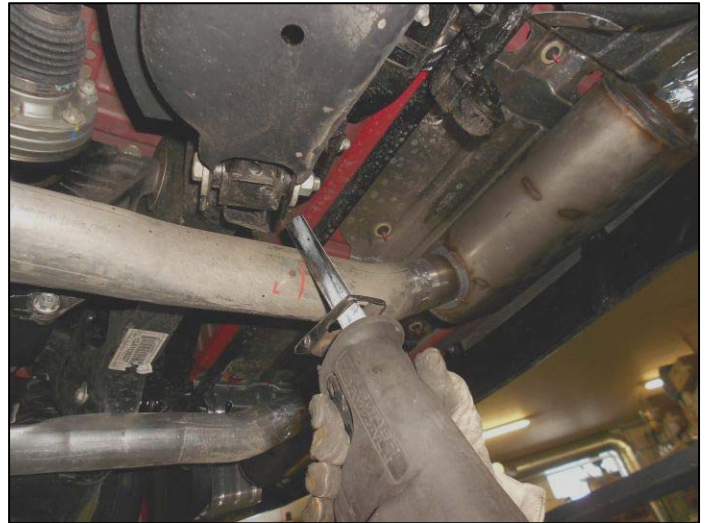
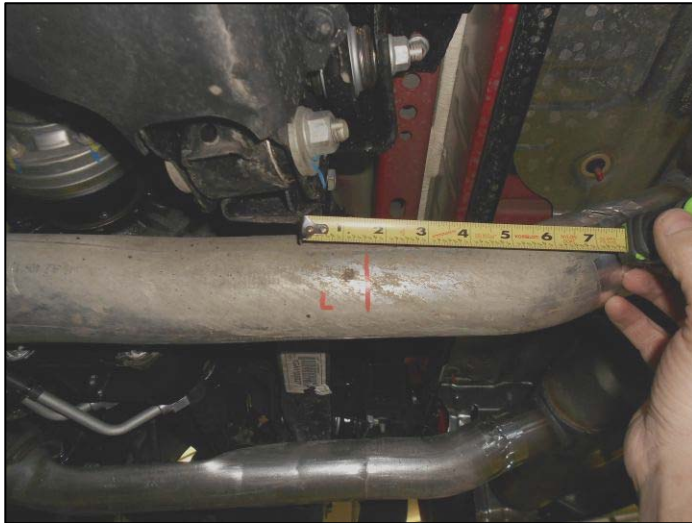
<u>Qty</u>	<u>Description</u>	<u>Part#</u>
1	Right Muffler Assembly.	815425-437
1	Left Muffler Assembly.	815425-438
1	Hardware Pack	PK822
2	2 1/4" Clamp	MC225BS
2	7/16" Hanger Keepers	HW502



Removal:

08/30/16

1) Raise the vehicle and support securely with stands. To ease the removal of the stock system, spray a penetrating lubricant onto the rubber hangers just behind the rear differential and also at the rear of the vehicle.



2) Begin by measuring back 1-1/2" from the rear of the suspension cross-member shown in the photos above and make a mark on both pipes. Support the exhaust system both in front and behind the area to be cut, then once you've double checked that the measurements are correct, cut both pipes at the marks. **Note: Use caution when cutting!**



3) After cutting the two front pipes and with the factory muffler still supported, remove the two hangers at the front of the muffler from the rubber mounts on the vehicle. You can now lower the supports at the front of the muffler and slide the muffler forward to disengage the rear hangers from the mounts on the vehicle. Lower the muffler and set aside. Carefully deburr the end of the pipes where cut with a file or die grinder. Then using a 15mm wrench, unbolt the two factory hangers at the rear of the vehicle from the frame. As you remove them, place them with the corresponding side of the factory muffler.

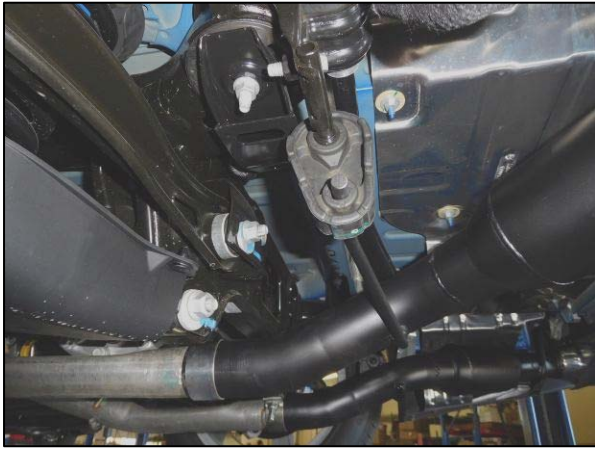
Installation:



1) Place the new Flowmaster muffler units next to the factory unit and swap the rear hanger mounts from the stock muffler to the Flowmaster assemblies.



2) Slide a provided 2¼" clamp onto the factory inlet pipes, then place the right muffler assembly **#815425-437** up into position and slide the inlet onto the factory pipe approximately 2.50" to 3.00". Support the assembly with a stand and remount the rear hanger mount to the frame, tighten securely. Then, connect the hanger at the front of the muffler to the rubber mount on the vehicle. Leave the clamp on the inlet loose for now. Repeat this step with muffler assembly **#815425-438** on the left side of the vehicle.



3) Adjust and level the two muffler assemblies to provide a satisfactory fit. They can also be adjusted forward or back to get the desired position in the rear valance cut-outs. A minimum of 1/2" clearance around all parts of the system must be maintained; while keeping suspension travel and vibration in mind. After adjustments have been made, and you are satisfied with the fit, you may now securely tighten the two muffler inlet clamps.

4) For a more secure installation, we highly recommend placing a minimum 1" weld on either side of the inlet slip-fit connections. Place the included 7/16" hanger keepers onto the ends of the hangers at the front of each muffler and slide up to the rubber mount; these will prevent the hangers from slipping out of the rubber mounts.