



**Installation Instructions**  
**717871**  
**2015-20 FORD F-150 TRUCKS**  
**2.7L, 3.5L, 5.0L ENGINE**  
**2/4 WD & All Wheelbases\***

\*Does NOT fit 122.5" wheelbase  
 \*Does NOT fit Standard Cab / Short Bed models

**OVERVIEW:**

1. Take a moment to read and understand these instructions before installing your Flowmaster performance system.

**NOTE:** Please inventory all parts now before continuing and if necessary, report any missing items to our tech line. This will avoid potentially stranding your vehicle until any missing replacement parts arrive.

ITM #	PART #	DESCRIPTION	QTY.
N/A	PK800	Hardware Package includes:	1
9	490HA	Front Clamp Hanger	1
10	226HA	Left Frame Hanger	1
11	HA226	Back Up Plate	1
12	MC250BS	2½" Stainless Band Clamp	5
13	MC300BS	3" Stainless Band Clamp	2
14	HW502	⅞" Hanger Keepers	2
15	HA168	Rubber Hanger	1
16	HW234	⅜" x 3-½" Tap Bolt	1
17	HW211	⅜" X 2" Bolt	2
18	HW303	⅜" Flat Washer	4
19	HW309	⅜" Lock Washer	3
20	HW103	⅜" Nut	3

ITM #	PART #	DESCRIPTION	QTY.
1	26737M	Inlet Pipe	1
2	26277M	Extension Pipe	1
3	72288-Z	Muffler	1
4	86327M	Right Tailpipe	1
5	86323M	Left Overaxle Pipe	1
6	86324M	Left Rear Tailpipe	1
7	86552M	Side Exit Pipe	2
8	ST507B	Tips	2

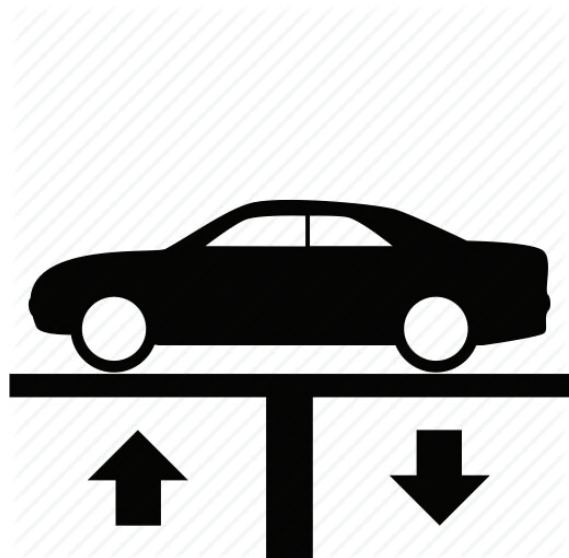
**REMOVE STOCK EXHAUST SYSTEM:**

2. Raise vehicle up on a hoist or rack to working height. If you don't have access to a hoist or rack, support vehicle with jack stands.

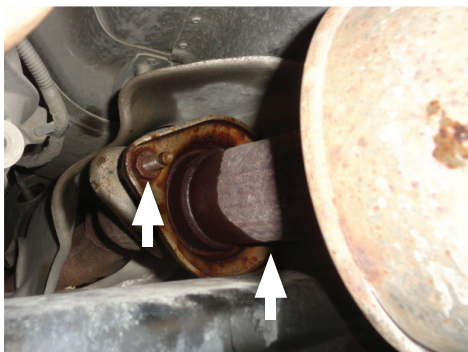
**WARNING:**  
 Avoid serious burns! Allow your vehicle time to cool completely before touching any factory engine components.

**To ease preparation and installation of your new kit:**

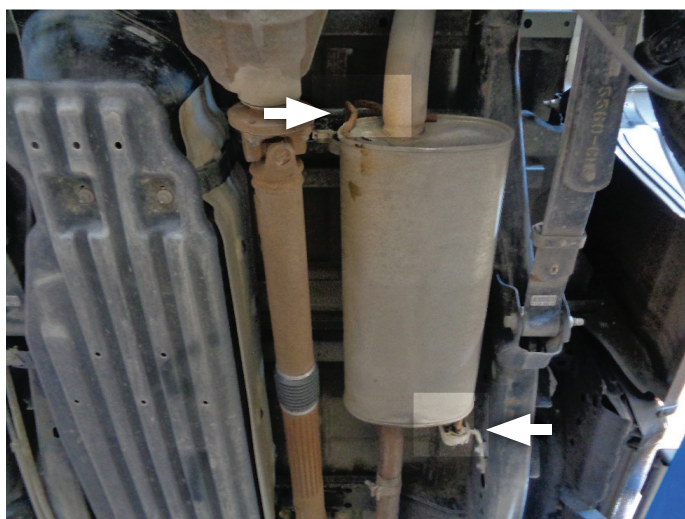
- Apply penetrating lubricant to mounts, bolts and clamps before you remove them.
- Use stands as necessary to support parts as you detach them from your vehicle and again as you install new parts.



3. Remove nuts from flange and disconnect but do not remove factory exhaust from catalytic converter.

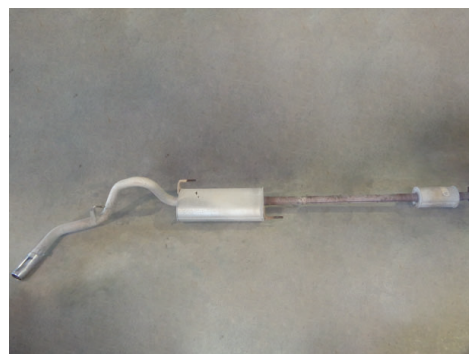


4. Disconnect factory muffler wire hangers (x2) from isolators on vehicle frame.



**NOTE:** Remove exhaust assembly from vehicle with the assistance of another person.

5. Disconnect tailpipe wire hanger from isolator then remove factory exhaust assembly from vehicle.



## INSTALL FLOWMASTER EXHAUST SYSTEM

- Remove nuts from stock and Flowmaster clamps, apply anti-seize compound to bolts and re-install nuts.

**NOTE:** The image in this step is intended for illustrative purposes only and may or may not accurately reflect components included in your kit.

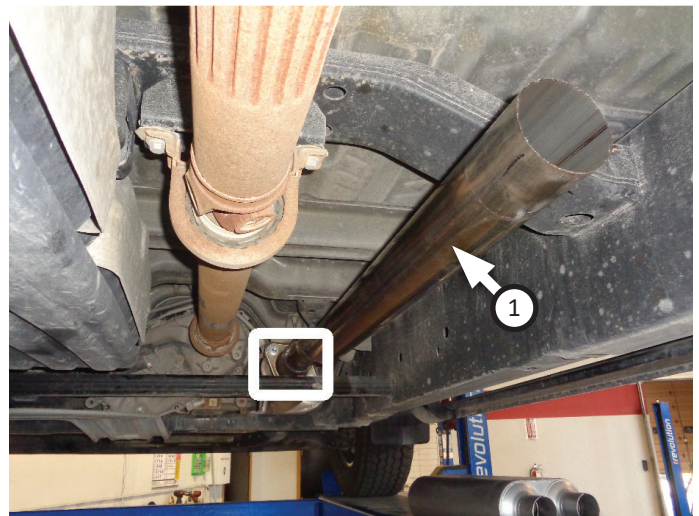
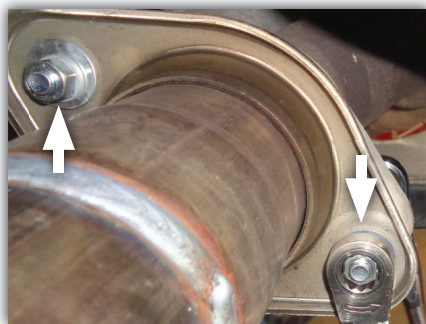
- Every slip fit connection in this kit must seat 3" deep except for the (x3) muffler connections which must seat 2" deep. Locate all components in your kit with a slip fit connection and mark them accordingly so your Flowmaster exhaust system fits properly onto your vehicle.



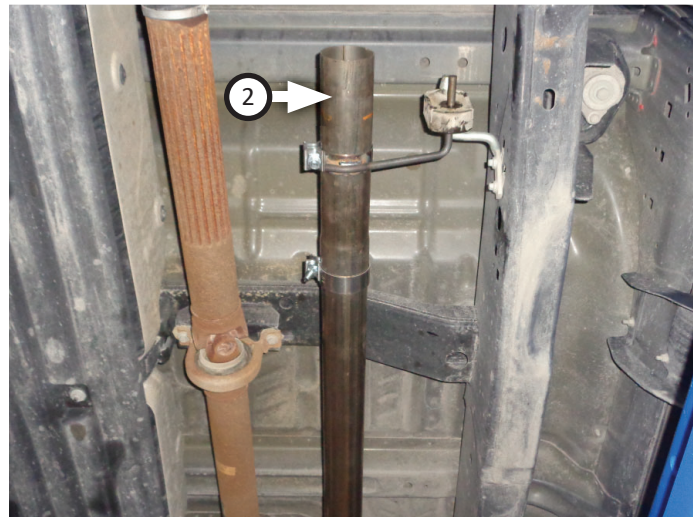
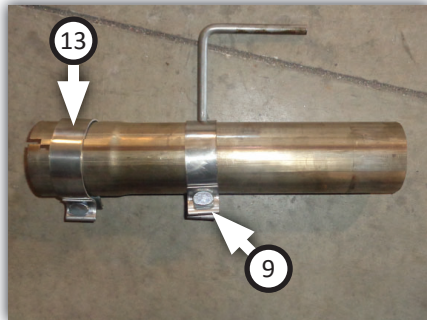
- If your vehicle falls within the specifications listed below, apply the corresponding modifications or assembly combinations to this kit to ensure it will install properly.

WHEEL BASE	BODY STYLE	BED LENGTH	INLET ASSY:	MODIFICATION
141"	Regular Cab	8'	Inlet Pipe only	Trim 4" from inlet pipe
145"	SuperCrew	5.5'	Inlet Pipe only	None
145"	SuperCab	6.5'	Inlet Pipe only	None
157"	SuperCrew	6.5'	Inlet+Extension	Trim 6" from extension pipe
163"	SuperCab	8'	Inlet+Extension	None

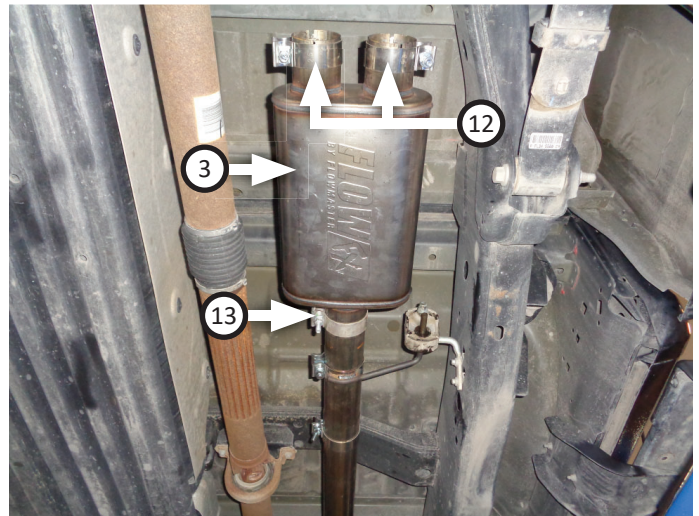
- Connect **inlet pipe (1)** to catalytic converter and secure using (x2 ea.) **bolts (17)**, **flat washers (18)**, **lock washers (19)** and **nuts (20)**.



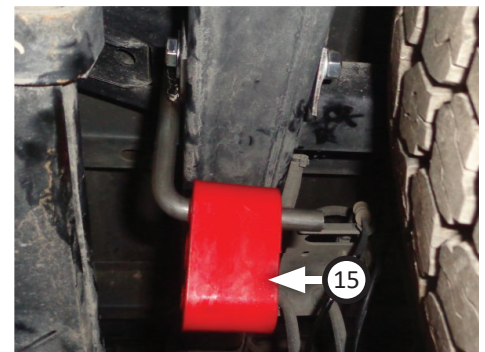
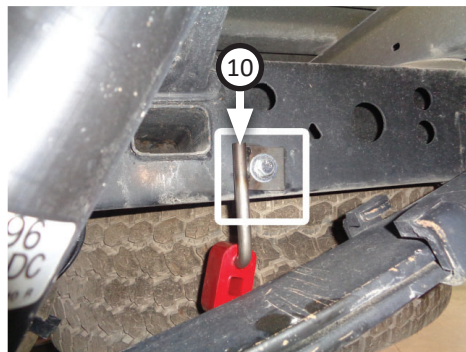
10. Place **clamp (13)** and **front clamp hanger (9)** onto **extension pipe (2)**. Hang assembly onto vehicle frame and connect to inlet pipe.



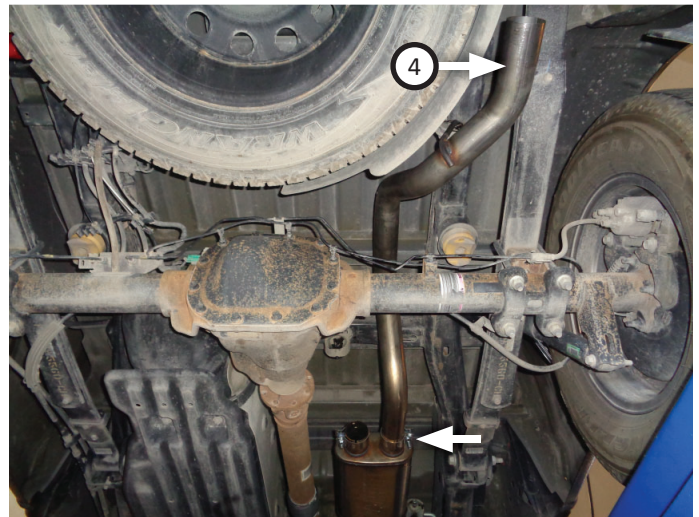
11. Place **clamp (13)** onto **muffler (3)** inlet then connect it to inlet/extension pipe. Place (x2) **clamps (12)** onto muffler outlets. Tighten front clamp just enough to allow for adjustment.



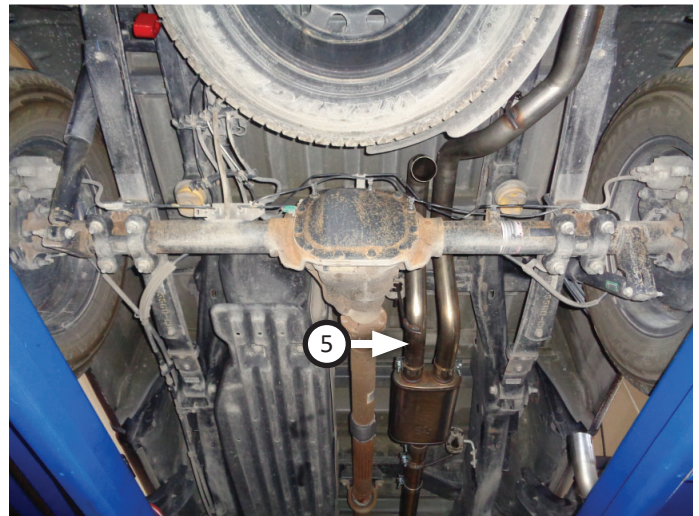
12. Fasten **left frame hanger (10)** to vehicle using **bolt (16)**, **backing plate (11)**, (x2) **flat washers (18)**, **lock washer (19)** and **nut (20)**. Then hang **rubber hanger (15)** on frame hanger end.



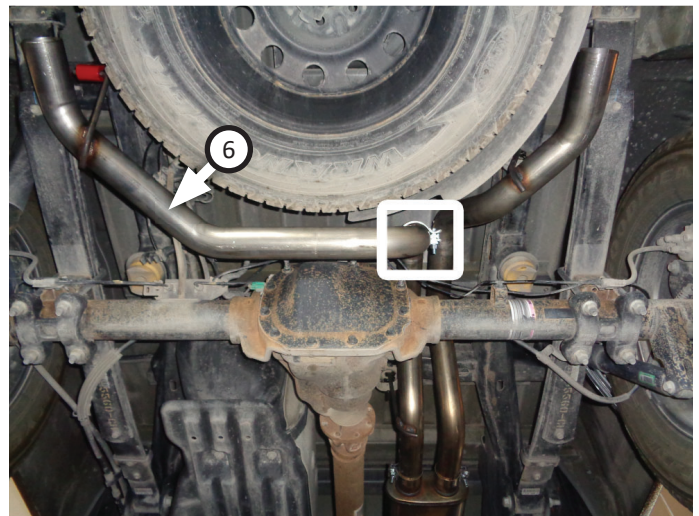
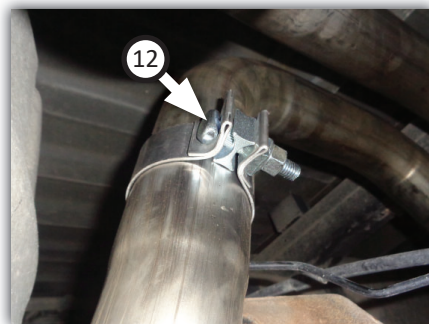
13. Route **right tailpipe (4)** over rear axle then connect it to passenger side muffler outlet. Insert wire hanger into stock mount to complete connection. Tighten clamp just enough to allow for adjustment.



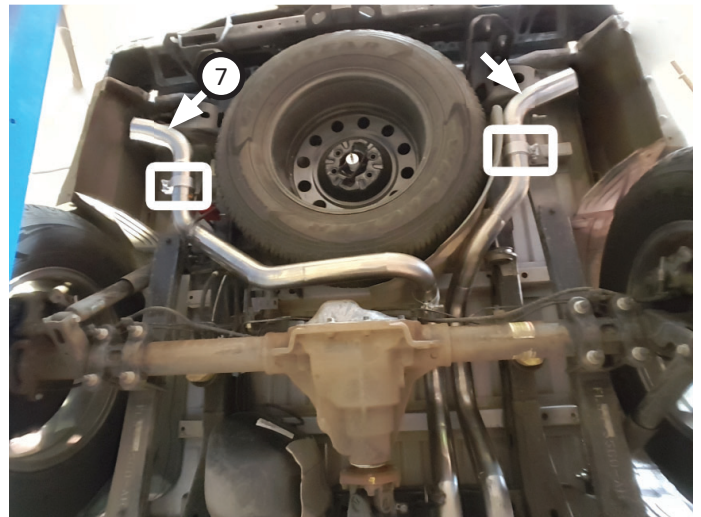
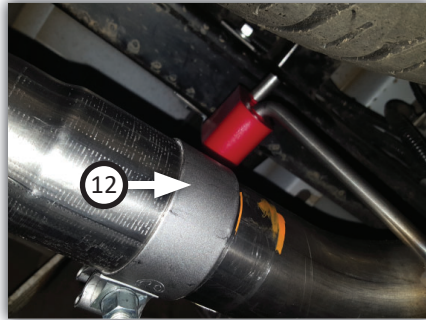
14. Route **left overaxle pipe (5)** over rear axle then connect it to driver side muffler outlet. Insert wire hanger into stock mount to complete connection. Tighten clamp just enough to allow for adjustment.



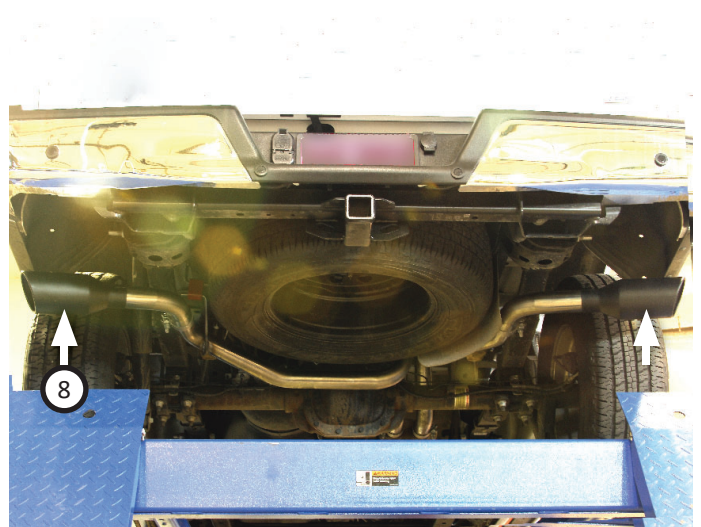
15. Place **clamp (12)** onto **left rear tailpipe (6)** and connect it to left overaxle pipe. Mount wire hanger into rubber hanger. Tighten clamp just enough to allow for adjustment.



16. Place (x2 ea.) **clamps (12)** onto **side exit pipes (7)** then connect them to rear tailpipes. Tighten clamps just enough to allow for adjustment.



17. Place (x2) **tips (8)** onto each rear exit pipe.  
18. Adjust exhaust components for fit; maintaining ½" clearance and compensating for suspension, travel and vibration, then tighten all clamps. Finally, fit (x2) **hanger keepers (14)** onto each sideways hanger.  
19. Recommended: Secure slip-fit connections with a 1-inch tack weld then spray high-temp paint over each weld to prevent rust and premature corrosion.



Congratulations, the installation of your FLOWMASTER performance exhaust system is now complete!





Installation Diagram  
**717871**  
**2015-20 FORD F-150 TRUCKS**  
**2.7L, 3.5L, 5.0L ENGINE**  
**2/4 WD & All Wheelbases\***

\*Does NOT fit 122.5" wheelbase  
\*Does NOT fit Standard Cab / Short Bed models

